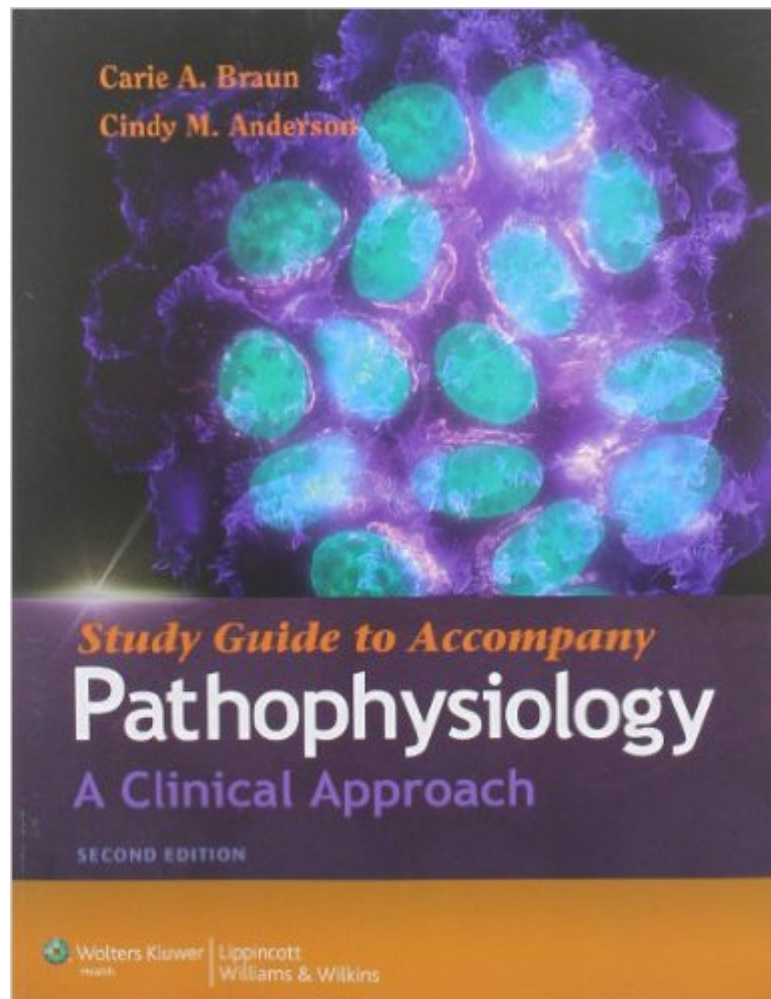


The book was found

# Study Guide To Accompany Pathophysiology: A Clinical Approach



## Synopsis

This companion Study Guide is a valuable learning resource that helps students better understand the principles of pathophysiology by reinforcing key concepts covered in the textbook. The Study Guide offers a variety of exercises that make it easy for students to understand essential information and build their critical-thinking skills. Plus, a special section on developing successful study habits helps them effectively prepare for quizzes and examinations.

## Book Information

Paperback: 160 pages

Publisher: LWW; Second edition (January 3, 2011)

Language: English

ISBN-10: 1608311872

ISBN-13: 978-1608311873

Product Dimensions: 8.4 x 0.3 x 10.9 inches

Shipping Weight: 12.6 ounces (View shipping rates and policies)

Average Customer Review: 4.5 out of 5 stars [See all reviews](#) (11 customer reviews)

Best Sellers Rank: #451,761 in Books (See Top 100 in Books) #118 in [Books > Textbooks > Medicine & Health Sciences > Nursing > LPN & LVN](#) #127 in [Books > Textbooks > Medicine & Health Sciences > Medicine > Basic Sciences > Pathophysiology](#) #128 in [Books > Textbooks > Medicine & Health Sciences > Allied Health Services > Medical Technology](#)

## Customer Reviews

the information in here really did not aid me in passing this class and the text itself is actually layer out pretty good, so the study guide is not so necessary, get it if you are desperate to pass or if you don't have a good patho base to start with.

Great book that bailed me out as the text book tended to get a little complicated. Pulled out an "A".

This book was shipped to me in good condition. The wife said she needed it for class but i'm not sure how necessary it really was. Overall, it was a cheap purchase that complimented the book nicely.

I'd definitely rent again. Reasonable price and great accessibility.

Just as described would order again

great book study hard

Great. Really helpful

very difficult

[Download to continue reading...](#)

Study Guide to Accompany Pathophysiology: A Clinical Approach Pathophysiology of Heart Disease: A Collaborative Project of Medical Students and Faculty (PATHOPHYSIOLOGY OF HEART DISEASE (LILLY)) Pathophysiology Online for Pathophysiology (Access Code and Textbook Package): The Biologic Basis for Disease in Adults and Children, 7e Pathophysiology: A Clinical Approach Clinical Applications of Pathophysiology: An Evidence-Based Approach, 3e Principles of Exercise Testing and Interpretation: Including Pathophysiology and Clinical Applications Student Solutions Manual and Study Guide to accompany Fundamentals of Fluid Mechanics, 5th Edition Study Guide to Accompany Egan's Fundamentals of Respiratory Care Study Guide to accompany Managerial Accounting for the Hospitality Industry Listening Comprehension Audio CD to accompany Kontakte: A Communicative Approach Audio CD Program to accompany Kontakte: A Communicative Approach (English and German Edition) Study Guide for Gould's Pathophysiology for the Health Professions, 5e Study Guide for Essentials of Pathophysiology: Concepts of Altered States Pulmonary Physiology and Pathophysiology: An Integrated, Case-Based Approach (Point (Lippincott Williams & Wilkins)) Pathophysiology: A Practical Approach Clinical Ethics, 8th Edition: A Practical Approach to Ethical Decisions in Clinical Medicine, 8E Nutritional Foundations and Clinical Applications: A Nursing Approach, 5e (Foundations and Clinical Applications of Nutrition) Netter's Orthopaedic Clinical Examination: An Evidence-Based Approach, 3e (Netter Clinical Science) Student Workbook to Accompany Mosby's Guide to Physical Examination Board of Certification Study Guide for Clinical Laboratory Certification Examinations, 5th Edition (BOR Study Guides)

[Dmca](#)